



Porto.

A city that
fosters
investment

Porto.





Porto.

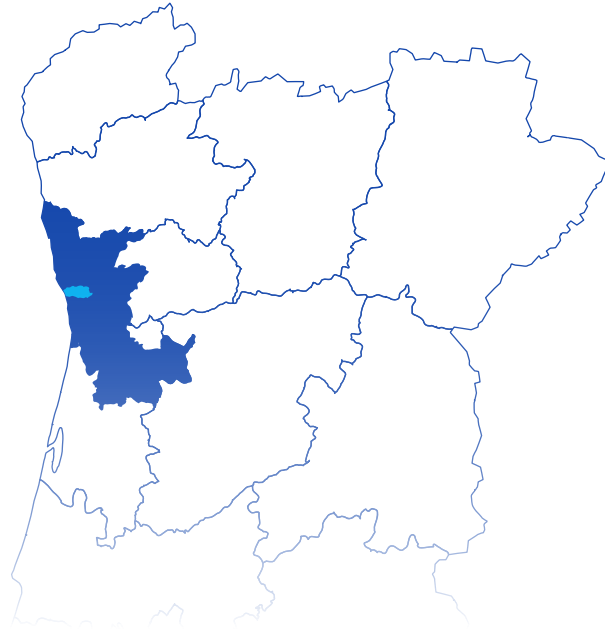
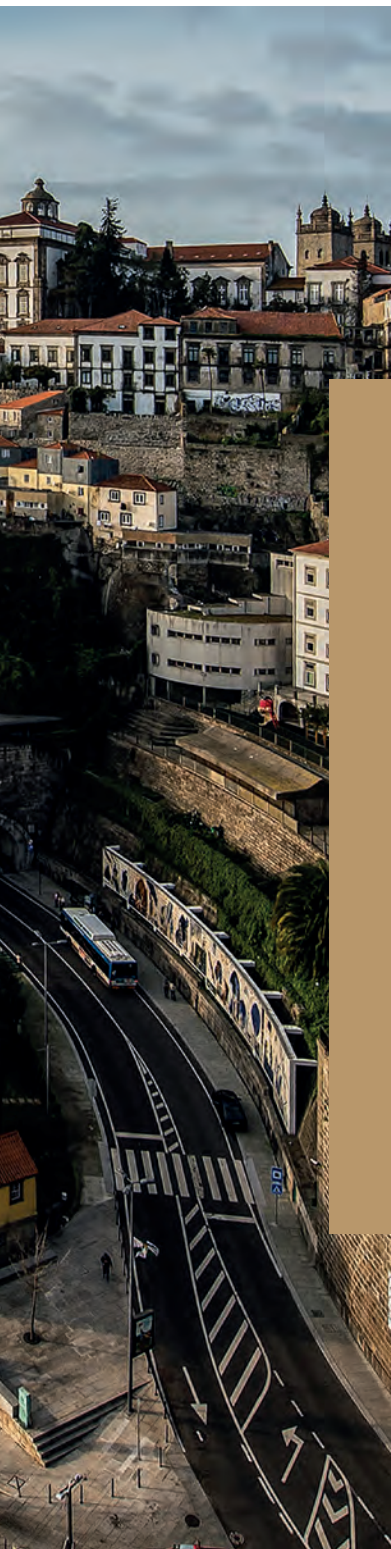
**A city that
fosters
investment**

Porto.




A Competitive Economic Region





Located in northern Portugal, the Porto Metropolitan Area is home to around 1.7 million people and covers an area of approximately 2040 Km². It has traditionally been an industrial and technological hub and a driver of the Portuguese economy. In recent years, Porto has seen a major economic boom and has become a top international business hub, driven mainly by growth in tourism, investment, and entrepreneurship. Today, Porto is a city of innovation, culture, investment, and entrepreneurship, attracting talent and businesses from all over the world.

Northern Portugal is an economically competitive and industry-driven region, representing 30% of Portugal's Gross Domestic Product (GDP) and Gross Value Added (GVA) in 2019. It also leads Portuguese goods exports, accounting for approximately 38% of them in 2020.



Northern Portugal positions itself at the forefront of technology and innovation, producing some of the world's most competitive products and services. Industrial know-how is embracing innovation and the opportunities of Industry 4.0. The region's leading clusters include ICT, Nearshore Services, Advanced Engineering, Technologies and Materials, Creative Industries, Health and Life Sciences, and Mobility Industries. Other industries such as wine, agro-food and real estate are also attracting domestic and foreign investments.

Although the Portuguese economy was negatively impacted by the COVID-19 pandemic, northern Portugal proved to be more resilient than expected and attracted an increasing number of foreign direct investment projects in 2020. The region continued to leverage its key attractiveness factors, such as highly qualified talent, cost competitiveness, world-class innovation and entrepreneurship, state-of-the-art infrastructure and accessibility, strategic location, and excellent quality of life. These structural factors, together with the unique combination of cultural heritage and innovation, are in line with resilience-seeking and nearshoring investment trends and therefore raise the confidence in the economic recovery.

35%

**of Portugal's Population -
Northern Portugal [2020]**

30%

**of Portugal's GDP -
Northern Portugal [2019]**

30%

**of National GVA -
Northern Portugal [2019]**

38%

**of Portuguese Exports of Goods
- Northern Portugal [2020]**

Porto Metropolitan Area Key Figures



Area

2040 Km²



Population

1.7M habitants



GDP

€34.3 B [nominal, 2019]



GDP per capita

€19,889 [nominal, 2019]



Exports of goods

€10.4 B [2020]



Imports of goods

€10.1 B [2020]

A Leading City in Urban Development



Porto has been considered a case study in creating a balanced, sustainable, connected city for the future and an attractive place for people to live, work and enjoy, having been elected as European City of the Year by the 2020 Urbanism Awards.

The past few years were marked by numerous urban regeneration projects in different areas of the city, both by private investors and the local government, as driven by the emergence of Porto as a top tourist destination and a global business hub.

Porto is undergoing a very profound transformation in its infrastructure and public spaces. The city is committed to rebuilding a city that it is ecologically sustainable and regaining communities that are healthy and socially sustainable, leading it to become one of the most liveable cities in Europe.

The Municipality has approved its 10-year City Development Plan, which follows a new approach to the city's ecological structure, with the increase of public green areas and the development of its hydrographic network of rivers and streams, the increase in the provision of available housing, with a particular focus on affordable housing, within the context of demographic recovery and the regulation of the real estate market.

The plan also focuses on soft modes and public transport, the improvement of public space, the protection of the city's identity, atmosphere, and heritage, and the promotion of economic competitiveness and employment, such as

creating new economic activity zones and strategic densification of specific areas of the city, which is fundamental for social and territorial cohesion.

The major projects being developed in the city are bound to have a positive impact on private investment and improve the city's overall attractiveness.

European City of the Year

2020 Urbanism Awards

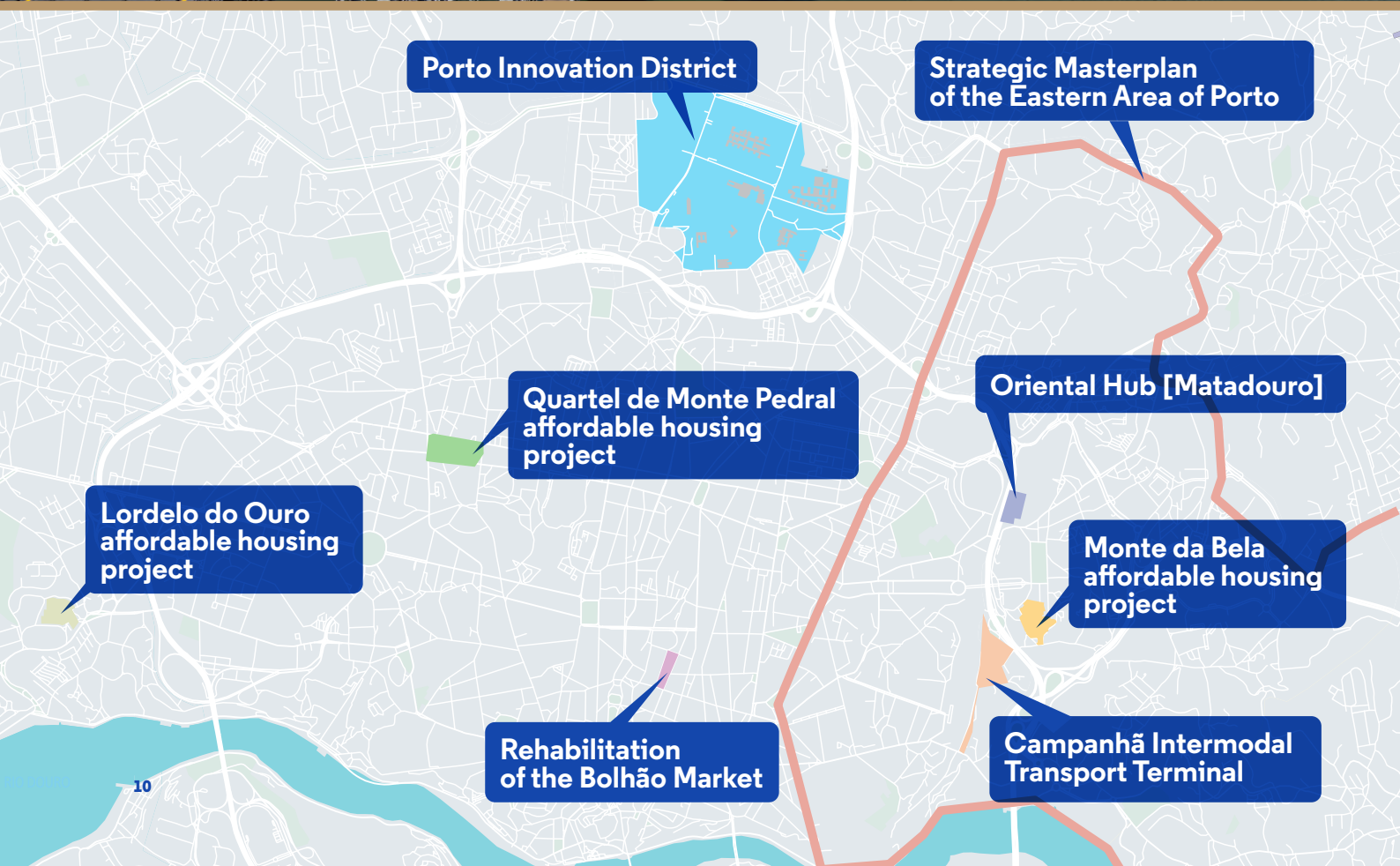
12%

growth of real estate projects
licensed in Porto [2020]

8%

growth of real estate projects
submitted for licensing in Porto [2020]

Porto Public Investment



Rehabilitation of the Bolhão Market

Project Type | Retail and leisure

Located in Porto's city centre, the Bolhão market rehabilitation project intends to maintain the original layout of the building and the fresh food market introducing technological solutions for comfort and safety and modernizing the equipments. The renovation project is based on three areas: the building, the market and people. The new market will reach a good balance between keeping the original spirit of the market alive (with the vendors on the ground floor) and bringing new customers and functions to the market (with the restaurants on the first floor).

Renovation works began in May 2018 and it is expected to finish in the second half of 2021. The renovation works represents a 35 M€ investment and part of the restoration investment will be also supported by community funds.



Oriental Hub [Matadouro]

Project Type | Mixed-use



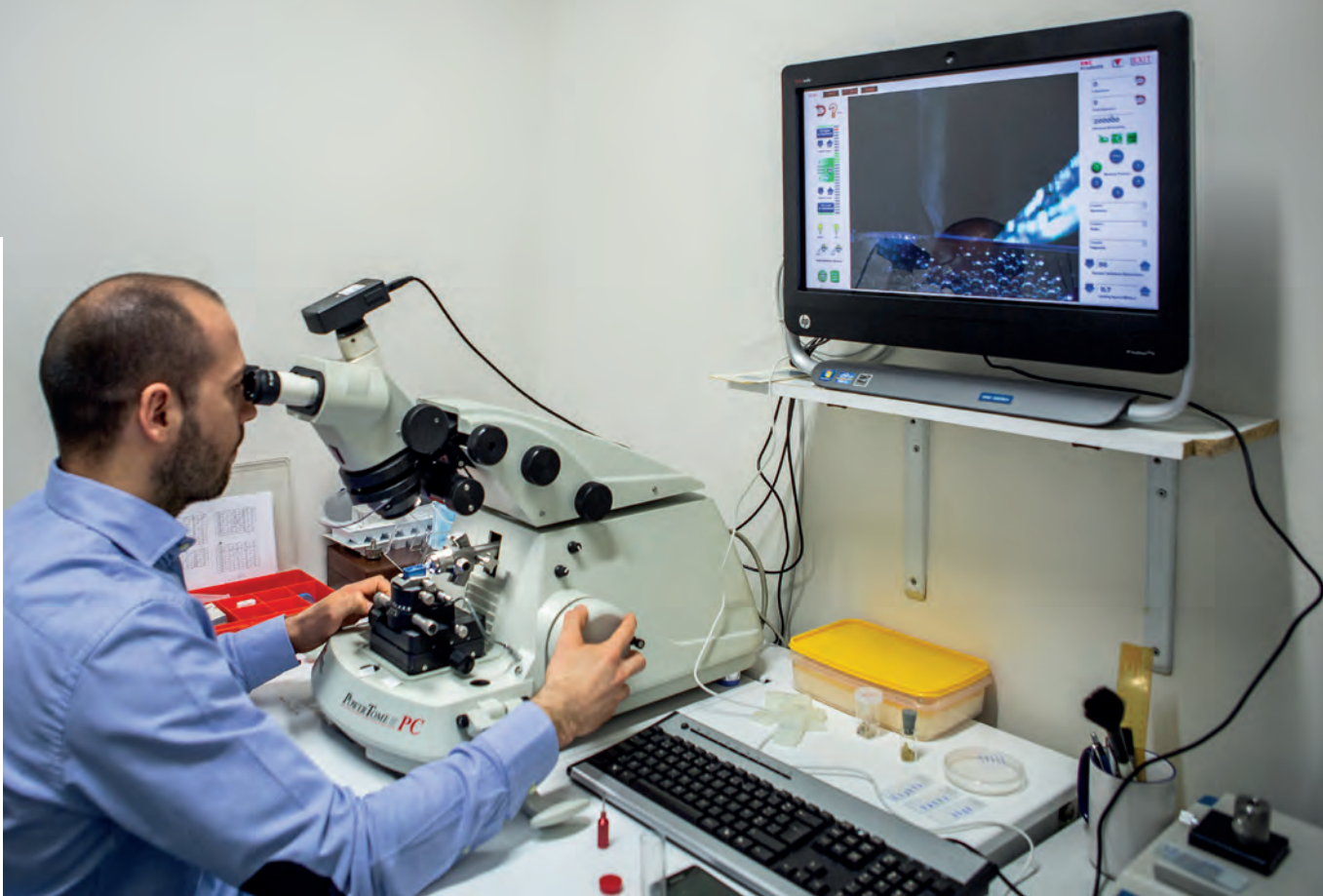
Oriental Hub (Matadouro) is an anchor project in the rehabilitation of the Eastern Area of Porto, which will enhance Porto's international image by transforming the old Porto Slaughterhouse into a entrepreneur hub and a convergence space between industry, culture and consumption activities.

It covers a construction area of 20,500 sq. mt., including offices, cultural facilities, food laboratories, and social areas with equipment and activities for the visitors and the local community.



The project will preserve the building heritage and will enhance opportunities for attracting public and private investment. It will take advantage of the great potential of the area, including proximity to main urban infrastructures (e.g. football stadium, sports centre, intermodal transport terminal), good space quality and availability, and excellent accessibility (highway, metro, train). It is expected to open in Q4 2024.





Porto Innovation District

Project Type | Urban Development

Porto Innovation District is a territorial specialization project particularly dedicated to academia and research which aims to re-develop the existing university campus of Asprela. Creativity and science, knowledge and community, investment and talent, all these elements are part of the plan which aims at transforming this area into a coherent and integrated innovation district.

Asprela hosts a significant concentration of higher education institutions, research institutes, hospitals and a large technology and incubation facility of the University of Porto (UPTEC), all in one single sq. km..

The Porto City Council, the University of Porto and the Porto Polytechnic are jointly championing a branding strategy for the area. Under the brand Porto Innovation District, the strategy is to build up an ecosystem approach within a more openly multi-functional study & research & work & live scheme that also includes residential developments, cultural and civic facilities and mobility improvements.

Strategic Masterplan of the Eastern Area of Porto

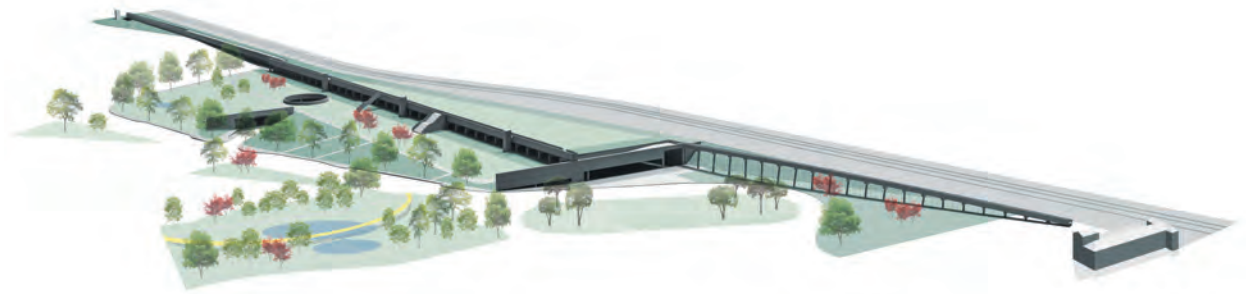
Project Type | Urban Development

The Strategic Masterplan of the Eastern Area of Porto sets out an urban regeneration programme covering 9.7 km² which is equivalent to 23% of the city's territory.

The Masterplan is based on the development of five mobilizing systems – Porto eco-district, Urban social lab, Campanhã Hub, Creative ecosystem of Campanhã and Corujeira, and Porto Innovation District Satellite. These mobilizing systems are in line with the following strategic focuses: economic development, housing, mobility, urban development, ecological environment, heritage, culture and identities, social services, and governance.

The main projects are the reconversion of former Porto Slaughterhouse (Oriental Hub - Matadouro), Campanhã Intermodal Transport Terminal, new Bridge over the Douro river and respective access routes, new roads in the Corujeira Area, and new business areas in Freixo and around Campanhã Train Station. The program also includes further rehabilitation of existing housing complexes and development of affordable housing units.





Campanhã Intermodal Transport Terminal

Project Type | Urban Development

Campanhã Intermodal Transport Terminal is a key project in the regeneration of the Eastern Area of Porto. With the construction of the bus terminal and corresponding interface with the railway and the metro, the new terminal will integrate different mobility solutions, including public and private buses, urban and long-haul trains, metro, and taxis, taking advantage of its location with easy road access. In addition, the surrounding public space will be rehabilitated and new access roads and parking lots will be built.

Through such multi-modal integration, the terminal will offer urban, inter-city, inter-regional and international connections (with direct metro connection to the airport in Porto). It will become one of the main transportation hubs in Porto and potentially a leading hub in Northern Portugal.

The tender for the construction of the terminal was launched in September 2018 and the construction is expected to be finished in Q4 2021. The total investment is around 13M€.

Quartel de Monte Pedral affordable housing project

Project Type | Residential Development

The former barrack Quartel de Monte Pedral will be transformed into one of the largest affordable housing project in Portugal, in order to provide affordable housing to the city's middle class, young couples and students. It is located in the city centre and has excellent accessibility. Covering a land area of 25,000 sq. mt., Quartel de Monte Pedral has a total gross construction area of 53,700 sq. mt.. 329 apartments of different sizes will be built. The apartments will be able to house up to 1,100 people.

In addition, the project will build a new student residence with 100 beds and 3,300 sq. mt., as well as a 2,800 sq. mt. retail area and two buildings with 12,300 sq. mt. for offices. The project also includes the opening of a new street and two central plazas for pedestrians.

The total investment for this project is 63 M€. The allotment operation is completed and approved. A public tender will be launched to select the private company or joint-venture which will build the complex.





Monte da Bela affordable housing project

Project Type | Residential Development

Located in Campanhã district, Monte da Bela project aims to provide affordable housing in the east part of the city. Covering a land area of 28,900 sq. mt., it has a total gross construction area of 25,000 sq. mt. 232 apartments of different sizes will be built, including 116 with capped rent. The apartments will be able to house up to 700 people.

Besides apartments, there will be an area for public equipment. With a privileged location in the eastern area of Porto, the building will be connected with the future Campanhã Intermodal Transport Terminal and Oriental Hub (Matadouro).

The total investment for this project is 28 M€.

Lordelo do Ouro affordable housing project

Project Type | Residential Development

Located in the western part of the city, in Lordelo do Ouro, this intervention aims to rehabilitate the environmental, social and urban parts of this area, through the building of affordable housing. The project foresees the construction of 300-320 apartments that could house about 1000 people.

The project has a total gross construction area of 31,300 sq. mt., of which 25,120 sq. mt. will be dedicated to affordable rental housing. It will be developed on a municipal land, where social housing buildings are already installed. The existing buildings will be rehabilitated and new housing units will be added. The project also intervenes at the landscape and environmental level, namely through the renaturalization of a watercourse which is currently intubated.

The investment funded by the municipality totals 44 M€. The public tenders for the architectural projects were launched in April 2020 and the winning bids were announced in January 2021.



Porto com Sentido program

Project Type | Incentive program

The “Porto com Sentido” program offers attractive incentives to develop residential construction and urban rehabilitation projects in the city’s 10 Urban Rehabilitation Areas.

The program will run a tender, during the fourth quarter of 2021 and the first quarter of 2022, for the execution of promissory lease agreements with the Municipality of Porto for up to 200 dwellings, with a limitation of 50 dwellings per candidate, provided the residential properties have the respective architectural project(s) approved. The leased properties will then be rented by the Municipality under the Affordable Renting Legal Regime.

The application to this tender offers several advantages:

- 50% reduction in the licensing fee;
- 6% VAT rate for urban rehabilitation works;
- Possible exemption of the transfer of property tax;
- 80% reduction in the public domain occupancy tax;
- During the lease period, which may last for 10 years, exemption of personal or corporate income tax in relation to the property income, and exemption of the city property tax.

The biggest advantage is, without a doubt, the guarantee of return on the investment, considering the lease promise signed by the Municipality of Porto.



A Top FDI Destination



In recent years, Porto has become a hotspot for foreign direct investment (FDI). Porto and Northern Portugal attracted 130 FDI projects during 2018-2020, which represented an average growth rate of 51% per year. Despite the impact of the Covid-19 pandemic, the number of FDI projects in the region increased by 8% in 2020, demonstrating Porto's resilience when comparing with other European cities.

Porto has successfully attracted the technology and service centres of prestigious international companies such as Natixis, Euronext, Sodexo, Continental, Volitalia, Vestas, Adidas, Bouygues Telecom, BNP Paribas, and also the innovation centre of Critical Techworks, a joint venture between BMW and the Portuguese company Critical Software. Foreign investors' confidence remains strong during the pandemic, as 66% are expecting to increase the pace of new investments in Porto and 72% are maintaining the intention to hire more human resources in the city.



Investors choose Porto to develop their business operations mainly due to its quality of life, social stability, infrastructure, labour skills and costs. With the investment in skills and infrastructure paying off, Porto is increasing its appeal for international investors, especially in highly qualified and innovative activities. Its strategic location has also made it one of the most relevant nearshore centres in Europe.

As a recognition of Porto's FDI attractiveness, the city received several distinctions from fDi Intelligence, including 5th Mid-sized European City for FDI strategy (2020/2021), and FDI Strategy Awards in the categories of Start-up & SME Support (2019) and Project Wins and Incentives (2018), and 3rd Best City to Invest in Southern Europe (2014/2015).

5th

Mid-sized European City for FDI Strategy
[fDi Intelligence 2020/21]

FDI Strategy Awards

Start-up & SME Support
[fDi Intelligence 2019]

Project Wins & Incentives
[fDi Intelligence 2018]

AIM Investment Awards

Europe Region Runner-up
[AIM Dubai 2020]

3rd

Best City to Invest in Southern
Europe [fDi Intelligence 2014/15]

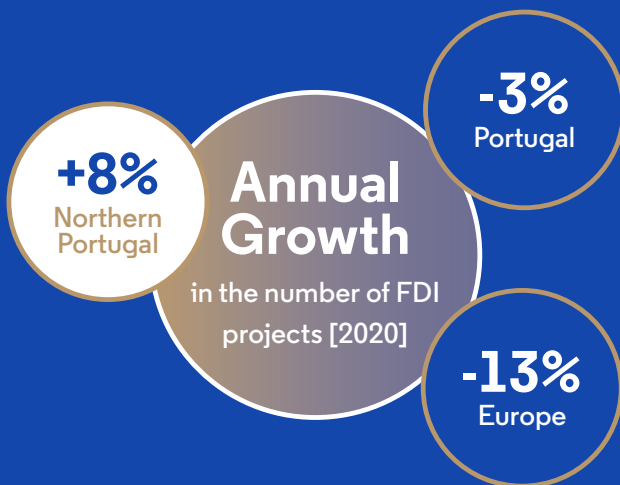
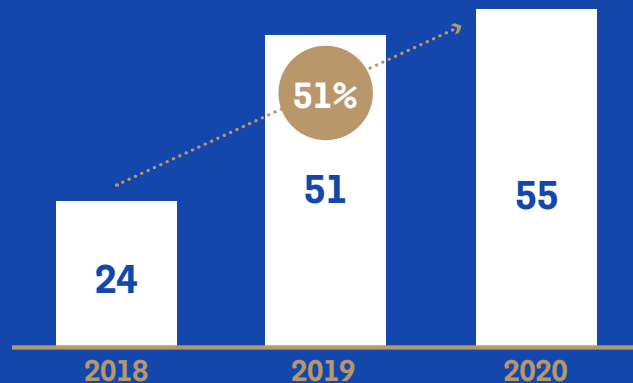
Number of FDI projects in Northern Portugal

130

new FDI projects announced in Northern Portugal [2018-2020]

51%

Average growth in the number of FDI projects in Northern Portugal [2018-2020]



Key Sectors

[Northern Portugal]

- 1° Digital & IT Services
- 2° Transportation Manufacturers & Suppliers
- 3° Metals & Minerals

Main activities

[Northern Portugal]

- 1° Manufacturing
- 2° R&D
- 3° Business Services

Future perspective

[Porto]

- 66% of foreign investors expecting to increase the pace of new investments
- 72% of foreign companies maintain the intention to hire more human resources



A Great Place to Live

Porto is not only a good place to invest, but also a good one to live, work and enjoy a unique quality of life.

With a rich culture and heritage resulting from nine centuries of history, Porto was considered European Best Destination in 2012, 2014 and 2017 and Europe's Leading City Break Destination in 2020. It has two UNESCO World Heritage sites, a beautiful landscape, an excellent gastronomy, and a vibrant cultural life.

Porto is a city open to foreign cultures and known for its capacity to welcome, integrate and make anyone feel at home. Portugal was ranked the 2nd country in the world in the Migrant Integration

Policy Index 2015. The city also offers expatriates high-quality services, such as healthcare and education, having four prestigious international schools with programs in English, French or German.

Thanks to its mild climate with 220 sunny days per year, people in Porto can enjoy outdoor sports all year round in beautiful parks or clear seawaters. White sandy beaches are only 7km away from the city centre, many with the EU Blue Flag.

Portugal was considered the 3rd country in the world in InterNations Quality of Life Index for Expats 2021. Porto was ranked 2nd in Time Out City Life Index 2018 and achieved the 9th place in Monocle's Small Cities Index 2020, which lists the best 20 small cities in the world in terms of quality of life.

3rd

Country in the world in InterNations Quality of Life Index for Expats [2021]

Country in the world in the Migrant Integration Policy Index [2020]

2nd

Place in Time Out City Life Index [2018]

9th

Place in quality of life in Monocle's Small Cities Index [2020]



A City for Talent

Talent is one of the key reasons why Porto continues to attract international companies, even during the pandemic. Porto's workforce is highly educated, flexible, open, committed, multicultural and multilingual, which is well suited to the challenges of today's knowledge-based economy. About 27% of the population in Porto holds a higher education degree. There are over 188,000 university students and 42,000 graduates per year in Porto's macro-region. Portugal is the 3rd country in Europe with the highest rate of engineering graduates. It was ranked the 7th country in the world in language and English skills, with Porto being the best English-speaking city in Portugal.

Porto's workforce is underpinned by a world-class education system. The Porto Metropolitan Area is home to 62 higher education institutions. The University of Porto is the best in the country in multiple rankings. It has more than 33,000 students, 14 faculties and one business school. The Porto Polytechnic is also the largest and most prestigious in the country, hosting multiple R&D units.

The city's ability to attract international talent is equally noteworthy. More than 30,000 foreign students were enrolled in higher education institutions in Porto's Macro-Region during the academic year 2019/2020, which represented an annual growth rate of 14%.

The city, packed full of talent and creativity, has become an ideal location for companies to develop highly innovative projects and quickly adapt to the new challenges that they are facing.

42 000

graduates per year -Porto's
Macro-Region [2019/2020]

30 000

foreign students per year
- Porto's Macro-Region
[2019/2020]

7th

country in the world in
language/English skills [Porto
– best English-speaking city in
Portugal, 2020]

188 000

university students - Porto's
Macro-Region [2019/2020]



The local innovation and entrepreneurship ecosystem in Porto is becoming increasingly vibrant. Porto and northern Portugal was the leading region in Portugal which filed the most patents at the European Patent Office in 2020.

The number of companies established in the metropolitan area grew by more than 33% from 2016 to 2019. Moreover, 48% of Top 25 Portuguese scaleups from 2015 to 2020 are based in Porto. The city is home to the country's leading high-tech companies and start-ups, such as Farfetch, BLIP, Critical Software, Feedzai, Talkdesk, Veniam, Sword Health, DefinedCrowd, and Didimo. Meanwhile, international investors like Teamviewer, Anchorage, Hostelworld and Devexperts are also recognising Porto's flourishing tech scene.

Porto won, in 2018, the distinction "The Best Start-up Friendly City of Europe" by the World Business Angels Investment Forum (WBAF). It was also considered by Atomico as the third fastest growing tech hub in Europe.

Porto hosts a considerable number of prestigious R&D centres in areas ranging from computer science, engineering, health, to mobility. These centres have established formal programs with reputed

organizations including MIT, UT Austin, Carnegie Mellon University, and Harvard Medical School. Around 10,000 researchers work in different research organizations in the Porto Metropolitan Area.

The excellence in R&D and innovation enabled Porto to attract the first subsidiary of the Fraunhofer Institute outside Germany and the Engineering Centre of Continental.

Best

Start-up Friendly City of Europe [World Excellence Award 2018]

3rd

fastest growing tech hub in Europe [Atomico 2018]

#1

region in Portugal in patent filing at the European Patent Office [Northern Portugal, 2020]

10 000

researchers in the Metropolitan Area [2020]

An agile location for businesses with global ambitions

Porto lies along Europe's West Atlantic Corridor, right at the intersection of the world's major international routes that join Europe, Africa and the Americas. The city's strategic location and top-notch infrastructure combined with Portugal's one-of-a-kind links to the rest of world, make Porto an ideal 21st century gateway to gain access to large strategic markets.

Businesses that choose Porto benefit from easy, efficient and reliable access to customers in all 31 European Common Market countries. According to the World Bank's Doing Business 2020 Report, Portugal ranks number 1 in the world in Ease of Trading Across Borders. Businesses in Porto also have preferential access to more than 50 overseas markets provided by EU's growing number of free trade and investment protection agreements. They benefit as well from Portugal's close ties to major emerging markets in portuguese speaking countries and other long-standing trade partners, such as Brazil, Angola, Mozambique, the U.S. and China.

Porto's unique location facilitates business whether you go West or East. Portugal is the nearest European country to the U.S. and South America and the only country in continental Europe following Western European Time, the same time-zone as the U.K. and Ireland, which is just one hour behind Central European Time and a 2 to 3 hour time-zone difference from markets

as far as Brazil, Russia, South Africa or the Middle East. This adds to the city's advantages as a prime choice for multinational companies nearshoring their operations. Indeed, over the last 3 years, Porto was selected by more than 20 multinationals as a nearshore location for shared services centres, including large investment from companies such as Natixis, BNP Paribas, Euronext, Sodexo, Continental, Adidas, Bouygues Telecom, Microsoft, Farfetch and Revolut.

20 +

multinational companies chose Porto as a nearshore location for shared services centres [2019-2021]

3h or less

time zone difference from markets in Europe, Africa, the Middle and South America

1st

country in the world at Ease of Trading Across Borders [World Bank, 2020]

725 M

consumers in the EU and Portuguese Speaking countries





With a vast network of air, sea and land routes, plus a state-of-the-art digital infrastructure, Porto ensures excellent accessibility to Europe and the rest of the World. Thanks to its compact urban structure, high population density, as well as the clustering of some of Portugal's main export industries on and around Porto, the city benefits from close proximity to all modes of passenger and freight transport, with the area's main transport hubs located within 10 to 30 minutes from Porto's historic centre and the city's central business district.

Porto International Airport stands as the fastest growing airport in Portugal. Passenger numbers doubled between 2014 and 2018, reaching a record of 13 million passengers in 2019. The airport is currently expanding its capacity to 20 million passengers per year. It hosts regular flights to 97 destinations in Europe, North America, Brazil, Africa and the Middle East, including major international hubs, such as London, Paris, Frankfurt, New York and Dubai. Flights take an average of 3 hours or less to reach other major EU cities. Porto International Airport also has one of the highest passenger satisfaction ratings in Europe, earning the title of Best Medium-Sized Airport in Europe from the renowned ACI Airport Service Quality ranking thirteen times in the last fifteen years.

Port of Leixões is the main harbour for Portuguese industrial exports. It ships to over 180 countries, handling 21% of Portugal's seaborne trade. It is one of the most efficient and competitive multipurpose ports of the Iberian Peninsula. Its facilities include two container terminals, which are undergoing expansion works that will gradually increase capacity to 1.7 million TEUs per year by 2025. The harbour's modern cruise terminal has won multiple international prizes of architecture and design. In 2019, it welcomed over 100 cruise ships and close to 90,000 passengers. Porto's harbour infrastructure also features a 60 hectare logistics platform.



The platform connects cargo flows to Portugal's extensive road network, the 4th best in Europe according to the World Economic Forum Global Competitiveness Report 2019, to the Atlantic railway corridor of the trans-european core railway network, and to the international airport located just 2 km away.

The public transport system of Porto is reliable, eco-friendly and affordable, featuring an extended metro, train and bus network that covers the entire Metropolitan Area. It ranks as the best in the country according to the European Customer Satisfaction 2020 Index for Portugal. The Metro of Porto has six independent lines, with 82 stations designed by local Pritzker Architecture Prize winner, Souto Moura. It won the Light Rail Award 2008 and the Veronica Rudge Green Prize in Urban Design 2013. Current construction works will add a new line and seven new stations to the network, expanding its total extension to 72 km. Porto's new Campanhã Intermodal Transport Terminal will further improve interconnectivity between all mobility solutions for both short and long-distance travelling to and

from Porto. The terminal, which is expected to become operational by the end 2021, will become a key interface in Northern Portugal's passenger transport system. Porto also features one of the most competitive and advanced ICT infrastructure of Europe. A 2021 survey by EY found that over 75% of established investors found Portugal's telecommunication infrastructure attractive, and IMD's World Digital Competitiveness 2020 ranking found that Portugal had the 5th best communications technology in the world. Porto boasts one of the largest public wi-fi networks in Europe, with hundreds of free hotspots in parks, buses and stations around the city. Furthermore, Porto was recently selected to spearhead the European Union Commission's strategy for Connected and Automated cross-border Mobility (CAM). The city is at the centre of the biggest EU-backed experiment of 5G technology, which is testing one of the first 5G Corridors for automated driving in Europe. The project is currently running live trials of vehicle-to-everything 5G infrastructure in the motorways linking Porto to the city of Vigo, in Spain.

Best

medium sized airport in Europe
[ASQ Ranking 2019]

97

regular destinations from Porto
International Airport

5th

best communications technology
in the World [IMD, 2020]

21%

port of Leixões share in Portugal's
seaborne trade [2020]



must-see destinations

Porto offers a unique blend between its rich historical heritage and the city's vibrant and cosmopolitan feel. The city was recognized as the World's Leading City Break Destination by the World Travel Awards 2020. It became one of Europe's must-see cities and the rising star of Portugal's tourism sector, making the World's Top 100 cities with the most international visitors for the first time in 2018, after soaring 42 positions in just 5 years according to Euromonitor International's Top 100 City Destinations ranking.



Best

city break destination
[World Travel Awards, 2020]

TOP 100

global cities with the most
international visitors [Euromonitor
International, 2019]

The city witnessed a remarkable growth in visitor numbers in the lead-up to the pandemic crisis, with the number of tourist guests in Porto reaching a historic high of 3.7 million in 2019, after growing consistently at double-digit rates. Tourism and hospitality saw a significant downturn with the closing of borders and circulation restrictions. A robust and increasing real estate market limited investor vulnerabilities and the government made available funding to severely impacted sectors. Tourism demand has shown some signs of recovery following the recent easing of restrictions, with Porto and the Northern region of Portugal becoming the country's second main tourist destination after Algarve.

Tourism and hospitality will play a crucial role in the ongoing economic recovery. The growth of international visitors in the period preceding the pandemic played a major role in Porto's economic upswing, leading to increased investment, entrepreneurial activity and urban regeneration. In July 2021, the mayors of some of the world's leading destinations met in Porto to rethink urban tourism in the post-pandemic age.

Organized by UNWTO, the Government of Portugal and the City of Porto, the Mayors Forum on Tourism and the Future of Cities highlighted the opportunity to restart urban tourism with a focus on sustainability, innovation and inclusion. Participants adopted the Porto Declaration on Tourism and the Future of Cities, which reaffirms cities' commitment to growing tourism sustainably and responsibly. This includes placing tourism on the urban recovery agenda, with policies aligned with the United Nations New Urban Agenda and the 2030 Agenda for Sustainable Development. The Declaration also states that signatory cities will promote multi-stakeholder cooperation for fostering innovation and using digitalization and big data to enhance both the tourist experience and the sector's positive impact on residents.

2nd

region in Portugal with most tourists
[June 2021]


3.7M

tourists visited Porto Metro Area
in 2019

A Sustainable City

The municipality of Porto is committed to rebuilding a city that it is ecologically sustainable and regaining communities that are healthy and socially sustainable, leading it to become one of the most liveable cities in Europe. Porto is making great investments in urban regeneration, sustainable urban mobility, and regeneration of disadvantaged communities, so as to improve urban quality, sustainability, as well as social and territorial integration. Moreover, the city is using a living-lab approach to encourage public and private stakeholders to work together on developing sustainable solutions that can improve the quality of life of its citizens.

Portugal was ranked the 7th in the world with the most environment-related treaties in force and the 9th with the best energy efficiency regulation, according to the World Economic Forum's Global Competitiveness Report 2019. In the case of Porto, it reduced greenhouse gas emissions by 36.2% between 2004 and 2018. This result was achieved largely due to improvement of energy efficiency in buildings and usage of electricity produced from renewable energy in public transport. The city has set an ambitious target of 50% CO₂ emission reduction by 2030 and achieving carbon neutrality by 2050. The Porto City Council has signed the Covenant of Mayors for Climate and Energy, establishing also a clear objective related to energy revolution and becoming a benchmark-setter in electric mobility. It is also a member of the C40 Group, a global network of cities leading the fight against climate change.



Porto has taken a set of relevant measures in the area of sustainability, with a long-lasting impact on the community and the wider North region. These include, among others, renewal of the city bus fleet with eco-friendly vehicles run by electricity or natural gas, replacement of public lighting using LED technology, development of a roadmap for circular economy by 2030, consumption of 100% renewable energy by the municipality, improvement of energy efficiency in public buildings and social housing, and promotion of decentralised production of renewable energy in local communities. The city is developing nature-based solutions to fight climate change and promote biodiversity, for instance by doubling the green area with the planting of native trees, increasing soil permeability and using nature-based solutions in urban regeneration and construction. The city has adopted an innovative urban water cycle management platform, which has received multiple international awards. The municipal water utility company Águas do Porto is also listed among the 50 leading utilities of the world.

As a recognition of Porto's efforts in reducing greenhouse gas emission and fighting climate change, the city received "Class A" distinction by CDP Europe Awards 2021. It was also elected to lead the EUROCITIES Environment Forum (2019-2020).

7th

country in the world with the most
environment-related treaties
in force [2019]

36.2%

city CO₂ emission reduction
[2004-2018]

Class A

distinction by CDP Europe Awards
2021

9th

country in the world with the best
energy efficiency regulation [2019]

50%

city CO₂ emission reduction target
by 2030



Invest Porto.

T. +351 222 097 027
invest.porto@cm-porto.pt
investporto.pt
linkedin.com/investporto

Know more
about us



Porto.