



hori
zōnte

hori
zōnte

**ROOTED IN PORTUGAL
WE ARE DEDICATED TO DESIGNING
ARCHITECTURE, URBAN SPACES,
LANDSCAPES, AND INTERIORS THAT
ARE SUSTAINABLE, INNOVATIVE,
AND HAVE A POSITIVE LOCAL AND
ECOLOGICAL IMPACT.**



**WE BELIEVE IN WORKING HAND IN
HAND WITH NATURE, HARNESSING
ITS POWER TO DRIVE OUR DESIGNS
FORWARD AND CREATE A BETTER
TOMORROW.**

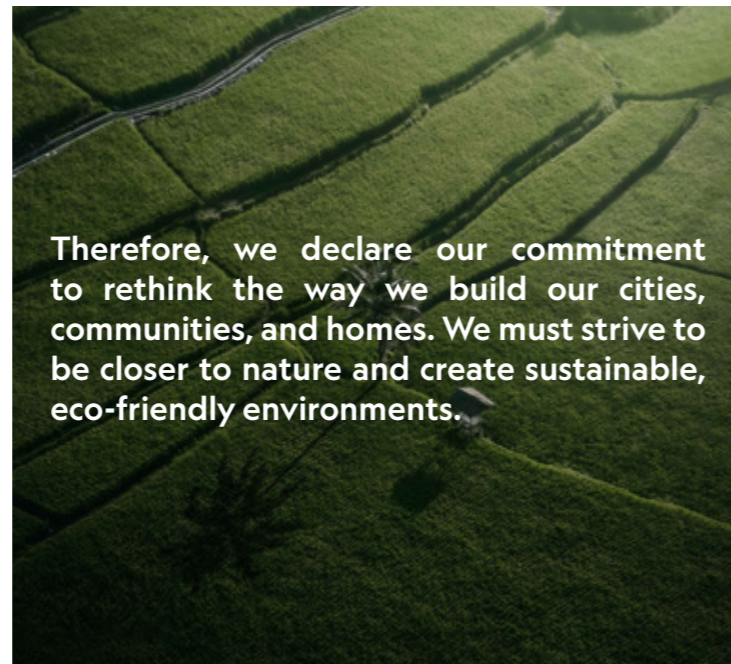
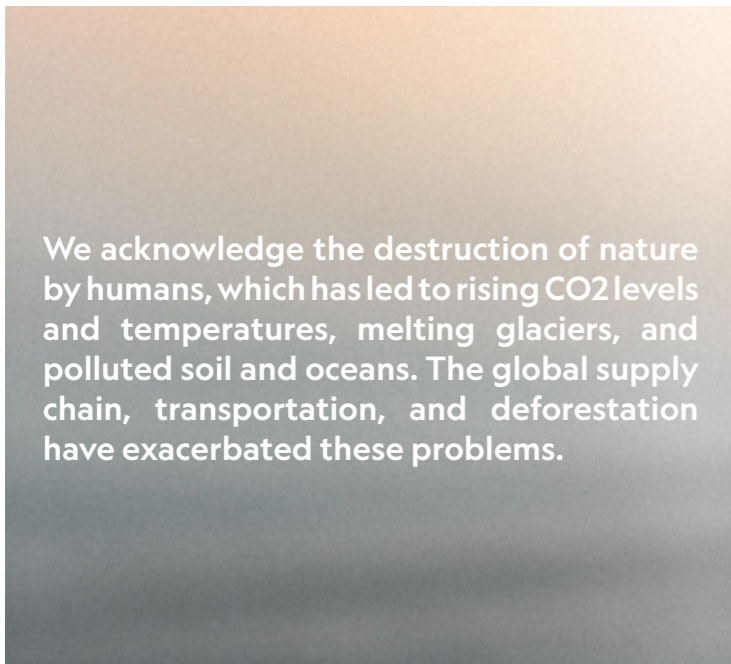


THE ROAD TO SUSTAINABILITY A MANIFESTO

We, citizens of the world, declare our commitment to creating a sustainable future for all.

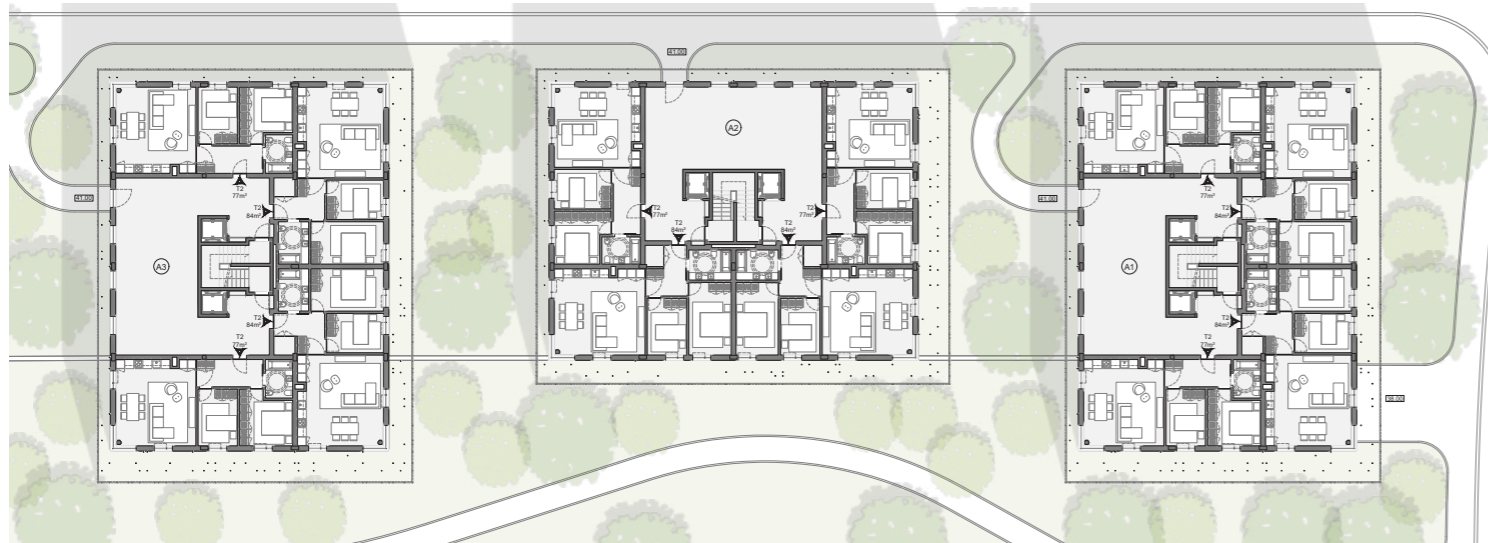


In our work, we actively strive to achieve the following SDGs:



**LET US COME TOGETHER
TO BUILD A SUSTAINABLE WORLD
FOR GENERATIONS TO COME.**



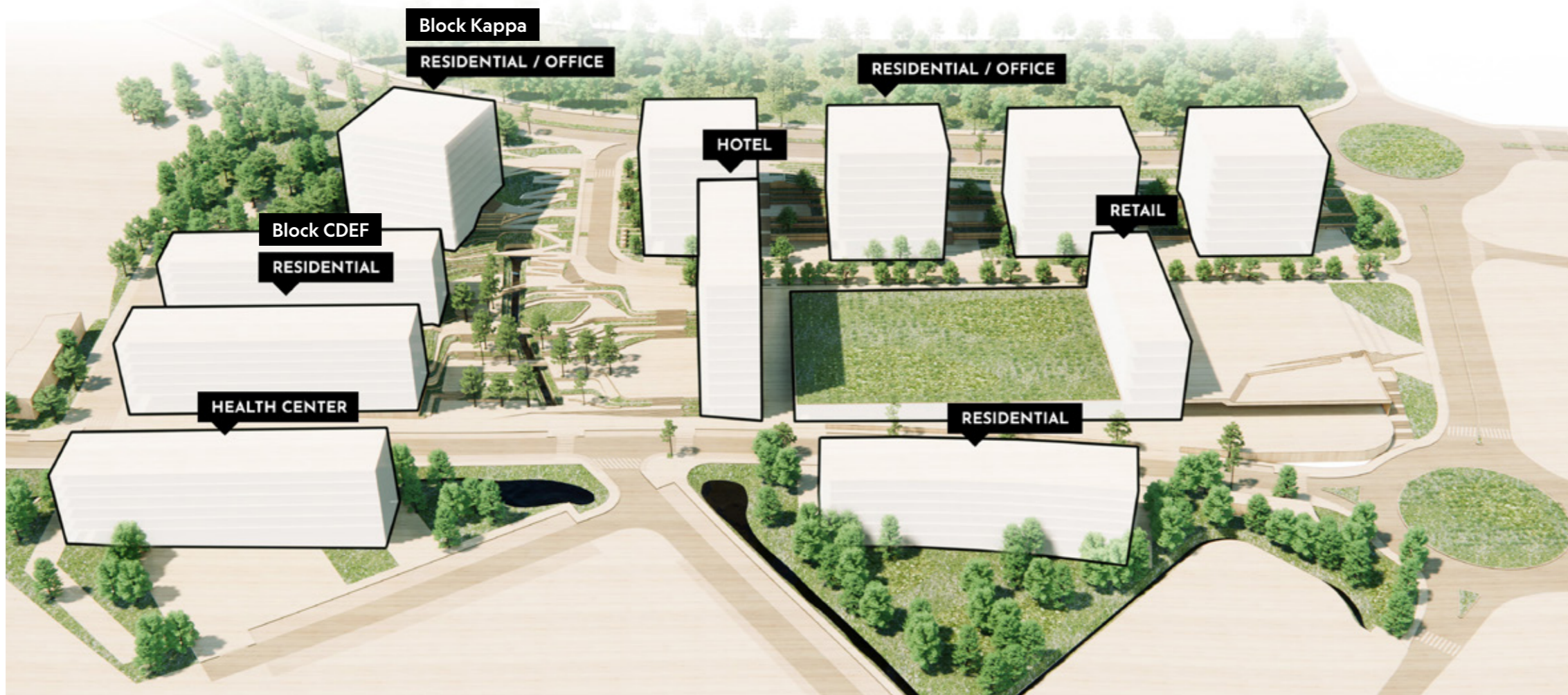


The interior surface of the apartments is extended to the outside, providing the inhabitants with a private garden and the chance to grow their plants and vegetables.



Nature that surrounds and define us,
the present moment we live in and the future we envision.





Urban Composition



May 2020



May 2021



May 2021



Block Kappa
Type
Residential
Area
6.150m²
60
Apartment Units
Status
Built

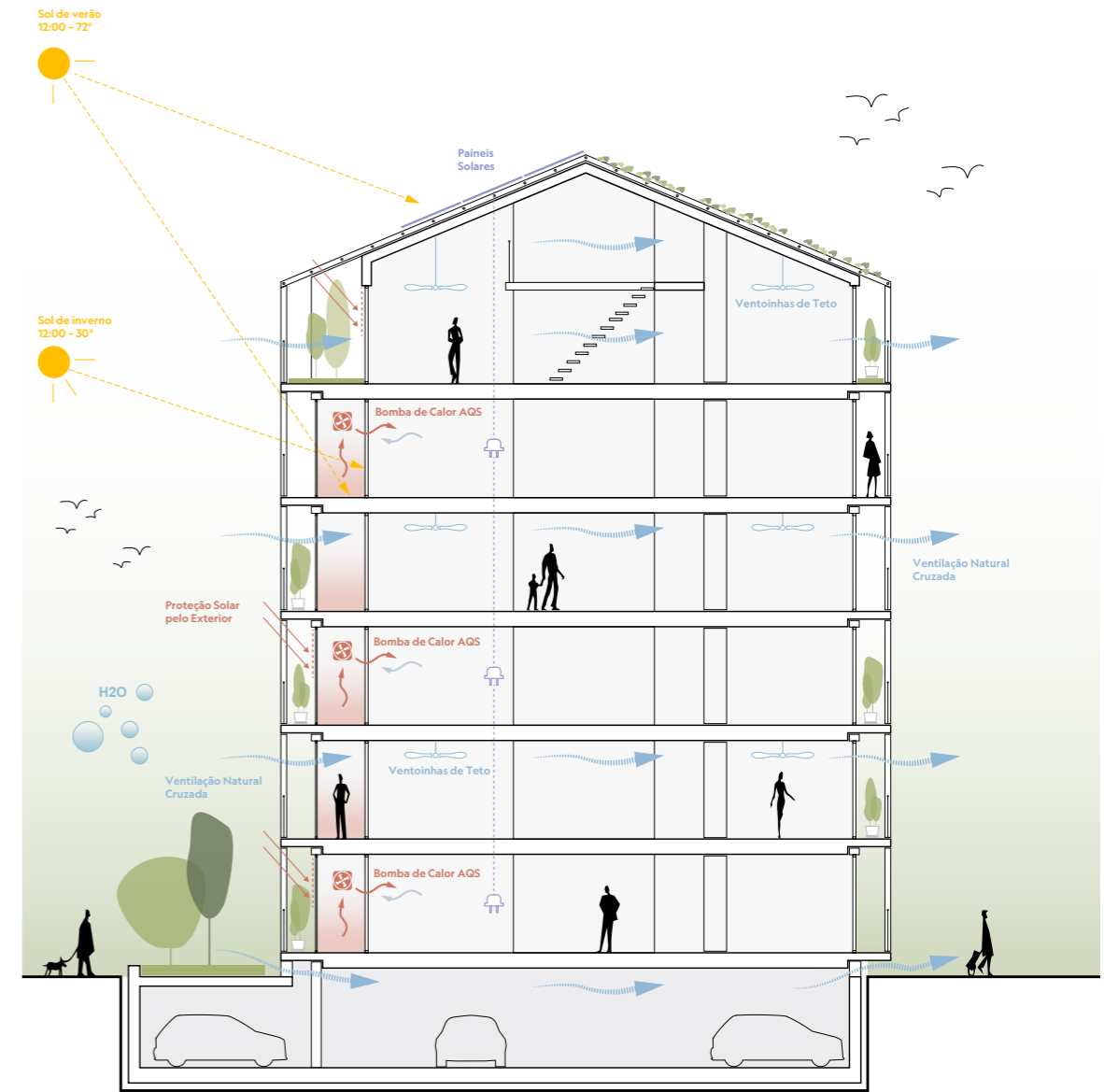
October 2021



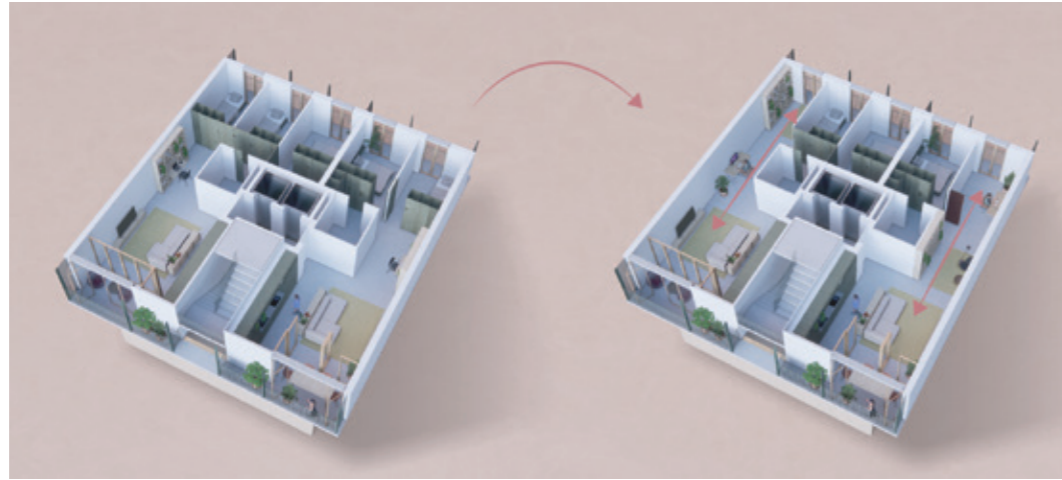
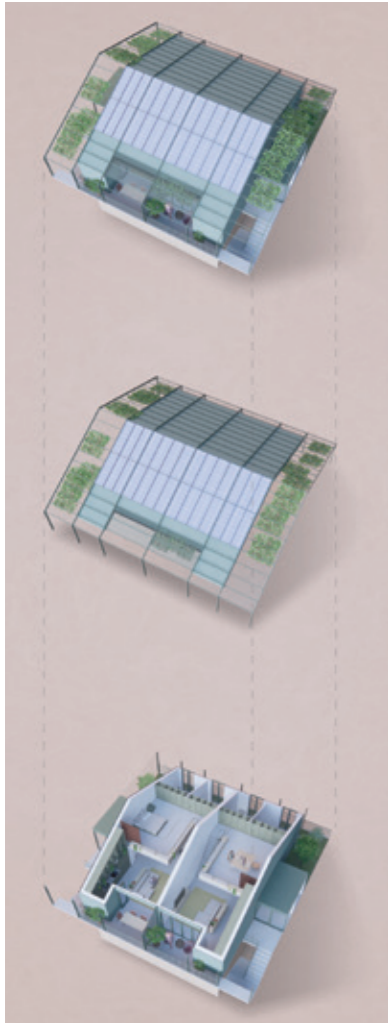
Block CDEF
Type
Residential
Area
12.600m²
60
Apartment Units
Status
Being Built

March 2021



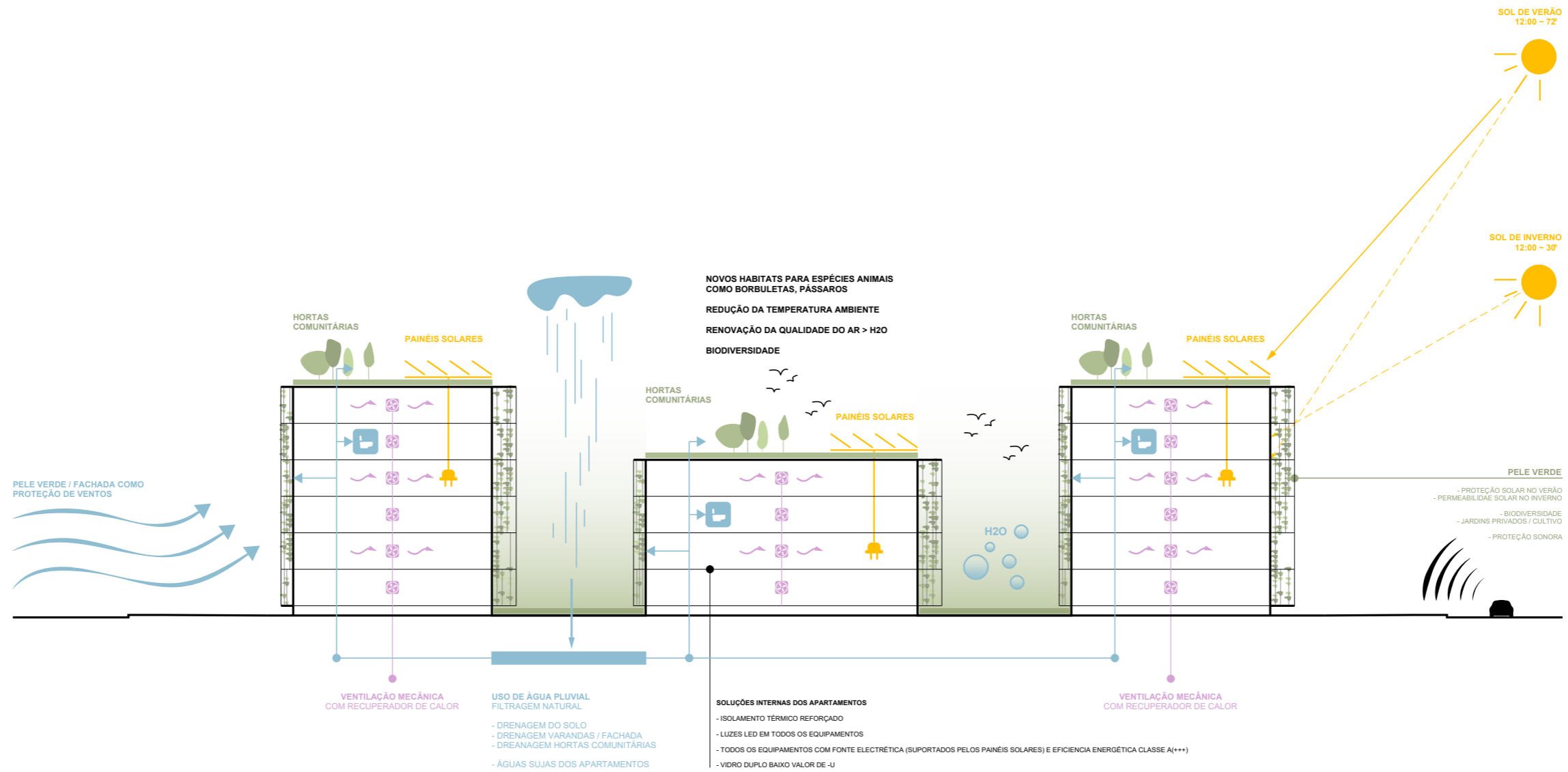


The urban intervention settles a positive and smooth transition between the consolidated city grid and the more rural and low-scaled scenario. A central park stitches the whole composition together.



Apartment configuration





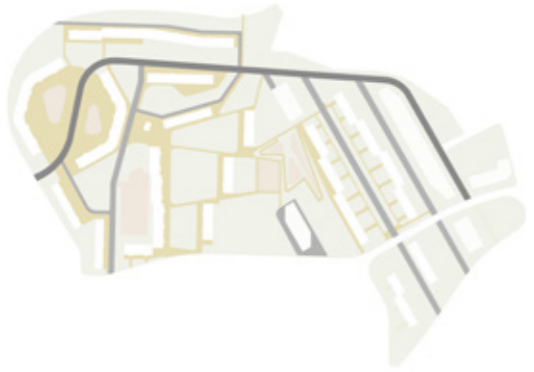
We focus on designing positive energy buildings and cities,
closer to nature, even if they're part of an urban context.



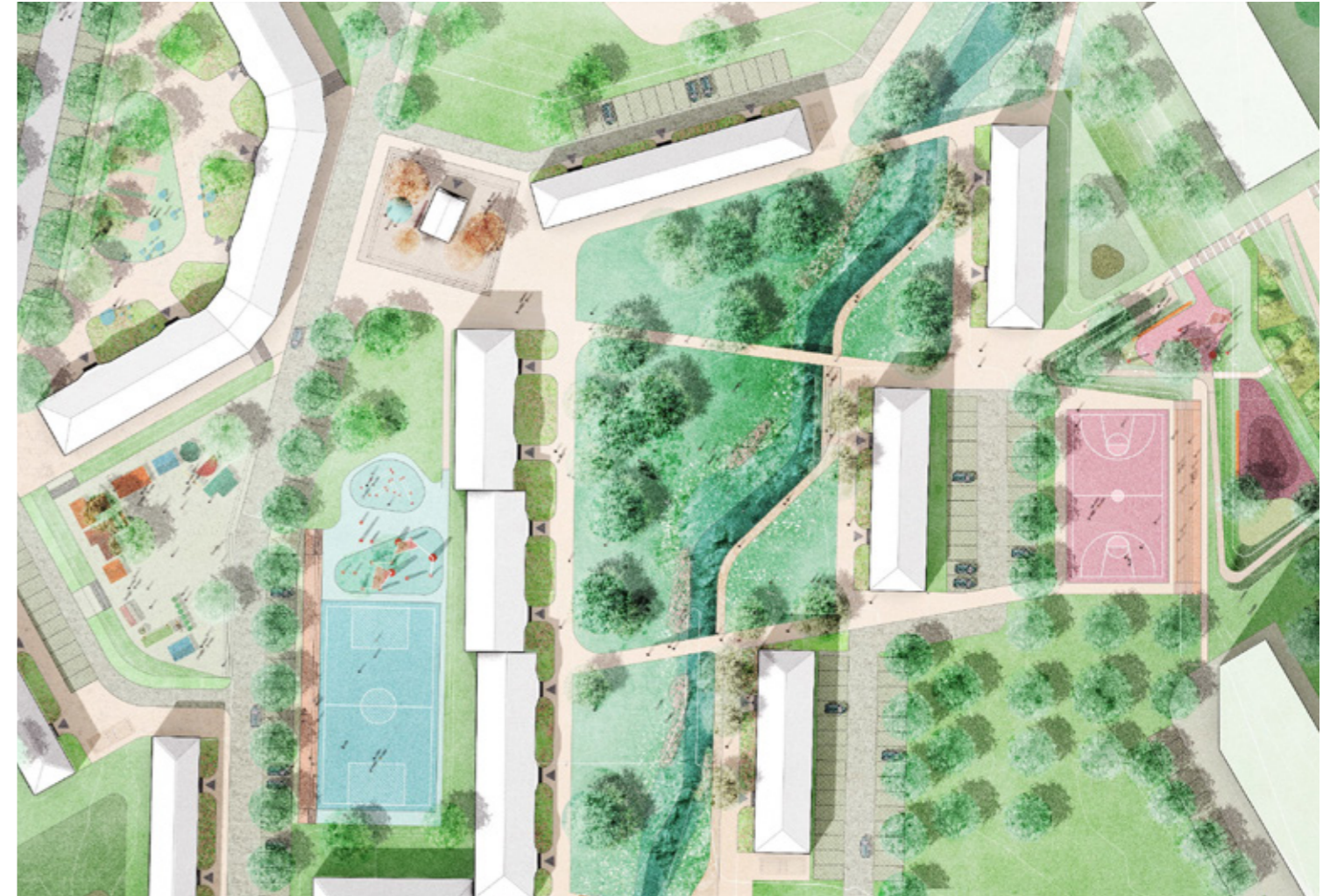
1st Prize
Competition

with
BAUM Atelier

Structure
Road network



Character
Neighborhoods and river stream



Social Catalysts
Programs and activities



The social aspect plays a big role to strengthen the community link,
bringing different programs and activities together.





The building is designed to maximise the site's building capacity.
The terraced geometry adapts itself to the plot's topography, enhancing the connection to the outside.

3 Flats
in Foz

Type
Residential

Location
Porto, PT

Area
2.000m²

Started
2021

Status
On going

Client
Private



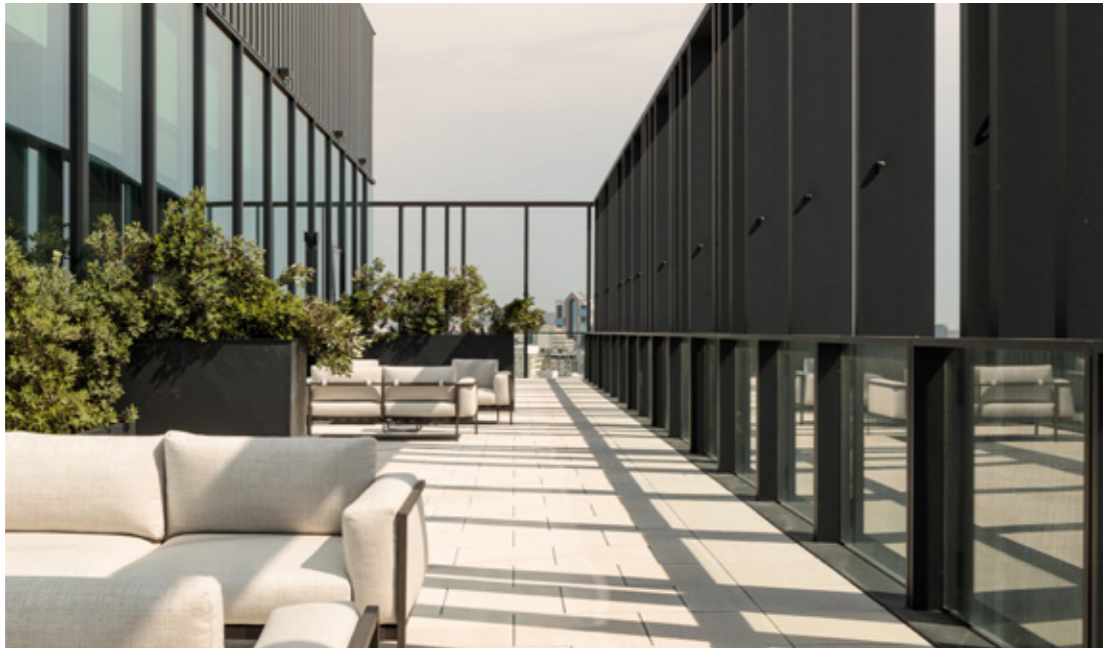


Towards the street, a new skin of plants creates a filter to the outside, protecting the apartments passively from visual and sun exposure.



To the courtyard, the balconies establish a dialogue with the garden downstairs. The bamboo shutters will bring privacy to the bedroom spaces.





June 2021
Photos by Francisco Nogueira



Environment Museum
Vila Nova de Gaia, PT

Cultural
Area 30.000m²



La Vida Después
Logroño, Spain
Cultural, Installation
Area 150m²





Metro-Bus
Porto, PT

Urban Planning
4 linear km



Hotel Barra Grande
Bahia, Brazil

Hospitality
Area 1800m²

Find us

Say Hi,
we'll get back
to you asap!



E-mail
info@hori-zonte.com



Website
www.hori-zonte.com



Instagram
[_hori_zonte](https://www.instagram.com/_hori_zonte)

At our office
address:

Rua Calouste Gulbenkian 227
4050-145 Porto - Portugal

or call us:
+351 22 6063600



hori
zōnte